

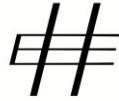
ELITE HAVENS



Elite Havens: Perfect Family Winter Getaway in Niseko

Posted by [Chisa de Ruiter](#) | Nov 19, 2024





ELITE HAVENS

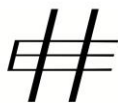


Dreaming of a winter wonderland skiing holiday in Niseko, Japan this winter? Elite Havens Asia's premier luxury villa rental and management provider offers an array of luxurious chalets with hot tubs and spectacular winter landscapes, suitable for the whole family or cosy two-bedroom flats that are close to everything in town.

Niseko is renowned for its pristine snow and convenience, and is suitable for both beginners and serious skiers alike, as well as snowboarders. Children are also well catered for with plenty of ski schools with experienced instructors. But it's the apres-ski experiences that also make a winter holiday in Niseko extra special. From cooking classes, or visiting the NAC Adventure Centre, to soaking in a Japanese onsen, or discovering the best sushi at specialty Japanese restaurants, Niseko offers something for the whole family.



Each Elite Havens chalet offers a home away from home, with a dedicated concierge who can assist with planning your restaurant bookings prior to arrival, along with a shuttle service to transport guests from the chalet to the slopes, arranging spa bookings to soothe tired muscles after a day on the slopes or even one of the many local cultural experiences on offer, the Elite Havens team are there to ensure that the guest experience is a memorable one.



ELITE HAVENS

Discover Niseko now by booking one of Elite Havens' private chalets including:

Birchwood Chalet

Super stylish and supremely comfortable, Birchwood Chalet is a three-bedroom chalet set in a peaceful and picturesque locale, overlooking woodlands in Niseko Village, and just minutes from Niseko Village Ski Resort.

Capturing the sophistication yet simplicity of contemporary Japanese design aesthetics, this modern mountain chalet makes a memorable first impression, with its striking black façade, cubist structure and surrounding birchwood. Crossing the threshold reveals bright, harmonious interiors with attractive pale wooden floors, minimalist décor and three generous bedrooms that comfortably sleep six, making Birchwood Chalet a delightful home away from home for friends and families.

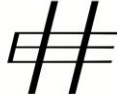
Casa La Mount

Ideally positioned in Annupuri Village, Casa La Mount promises to be your quintessential mountain retreat. The spacious four-bedroom stone and wood chalet is reminiscent of a



traditional Whistler Ski Lodge design, blending into the surrounding nature and just 850 meters from Niseko Annupuri ski lifts.

The classic styling of Casa La Mount is matched by sumptuous furnishings, large bedrooms, and elegant modern decor giving the chalet a sense of character and a warm, lived-in atmosphere. An open-plan



ELITE HAVENS

living area is highlighted with a huge designer sofa and the high ceilings complement full wall gable windows that present stunning panoramic views over the Niseko Valley to the Konbu Range. Natural light spotlights wooden tones find voice throughout the luxurious setting.

On a quiet street, you will love Casa La Mount's amazing location close to the ski lifts as well as some very famous restaurants with modern cafes not too far away.

To view the full selection of luxury chalets to book

visit: <https://www.elitehavens.com/japan-private-chalets/>